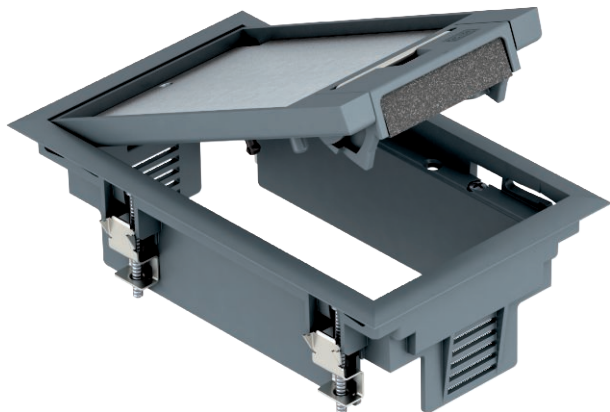


Technical data sheet

GES2 service outlet with handle clamp

Item no. 7405116



Service outlet with handle clamp for up to 3 individual Modul 45® devices in one UT3 universal support, use in trunking systems for indoor use.



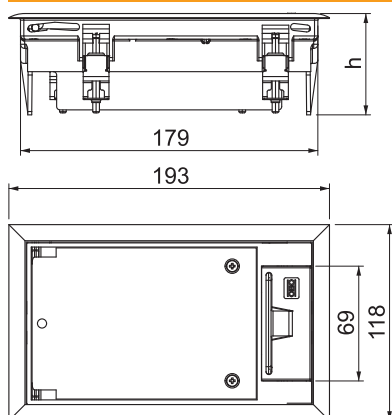
PA Polyamide

Additional product text, instruction	Up to two installation devices with 50 mm central plate can be inserted.
Additional product text 1	

Master data

Item no.	7405116
Type	GES2 U 7011
Description 1	Service outlet
Description 2	for duct mounting
Dimension	192x118x70
Colour	Iron grey
RAL number	7011
Material	Polyamide
Material symbol	PA
Smallest sales unit (VG)	1,00 Piece
Weight	61,30 kg/100 pc.

Technical data



Wide external dimensions	118,00 mm
Wide installation dimensions	104,00 mm
Length of external dimensions	194,00 mm
Length of installation dimensions	180,00 mm
Number of installable devices	3,00
Number of mounting boxes	1,00
Floor covering thickness	5,00 mm
Floor covering protection frame	<input checked="" type="checkbox"/>
Floor care	Dry
Version for	Rectangular
Seal installation option	<input type="checkbox"/>
Installation depth	73,00 mm
Floor height	73 mm

Technical data sheet

GES2 service outlet with handle clamp

Item no. 7405116



Technical data

Device support to accept mounting boxes	<input checked="" type="checkbox"/>
Suitable for wet care	<input type="checkbox"/>
Suitable for screed-flush closed underfloor ducts	<input type="checkbox"/>
Suitable for screed-covered underfloor ducts	<input checked="" type="checkbox"/>
Suitable for raised floor installation	<input type="checkbox"/>
Suitable for cavity floor installation	<input type="checkbox"/>
Suitable for underfloor ducts	<input checked="" type="checkbox"/>
With floor covering recess	<input checked="" type="checkbox"/>
Nominal size for device installation units	2
Suitable for underfloor box	250
Opening mechanism	Handle
Frame version	Carpet protection frame
Schwerlastausführung	<input type="checkbox"/>
Typ des Einbausystems	UT3
Approvals	VDE