

Technical data sheet

Medium and fine protection FLD for two-core systems

5 V

Art.-Nr. 5098600



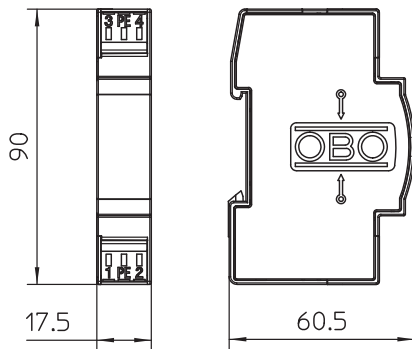
Surge protection for use in measurement and control technology

- Medium and fine protection
- Standard design for single core systems
- Two-stage protection circuit
- With installation-friendly, screwless connection terminals
- In space-saving 17.5 mm grid
- With inductive decoupling in the longitudinal branch

Application: Universal use on any 35 mm DIN profile rail in every commercially available distributor housing.



Dimensions



Master data

| | |
|---------------------|-----------------------------|
| Item no. | 5098600 |
| Type | FLD 5 |
| Description 1 | Lightning barrier |
| Description 2 | with decoupling inductivity |
| Dimension | 5V AC |
| Smallest sales unit | 1,00 Piece |
| Weight | 5,20 kg/100 pc. |

Technical data sheet

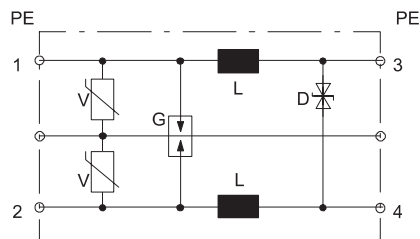
Medium and fine protection FLD for two-core systems

5 V

Art.-Nr. 5098600



Technical data



| | |
|--------------------------------------|-----------------------------|
| Category | Type 1+2+3 / D1+C2+C1 |
| SPD to IEC 61643-21 | Class I+II+III / D1+C2+C1 |
| Connection cross-section, flexible | 0,14 - 2,50 mm ² |
| Connection cross-section, multi-wire | 0,14 - 2,50 mm ² |
| Connection cross-section, rigid | 0,14 - 2,50 mm ² |
| Number of poles | 2,00 |
| Insertion loss | 3 dB @ 180 kHz dB |
| Earthing via: | Terminal |
| Explosion-tested version | <input type="checkbox"/> |
| Telecommunications contact | <input type="checkbox"/> |
| Total discharge current (8/20) | 10 kA |
| Total discharge current (10/350) | D1: 3 kA |
| Frequency range | 0 - 180 kHz |
| Frequency range | 0,00 - 0,18 MHz |
| Cut-off frequency | 0,18 MHz |
| Maximum continuous voltage AC | 5,00 V |
| Maximum continuous voltage DC | 8,00 V |
| Insulation resistance | >1 MΩ |
| Impulse discharge current (10/350) | 1,50 kA |
| Nominal discharge current (8/20 μs) | 5,00 kA |
| Capacity (wire-wire) | <10 nF |
| Capacity (wire-earth) | <1 nF |
| Lightning protection zone LPZ | 0→3 |
| Rated current | 1,00 A |
| Nominal load current AC | 0,70 A |
| Nominal load current DC | 1,00 A |
| Installation type | DIN rail 35 mm |
| Testing standard | IEC 61643-21 |
| Shielding connection available | No |
| Protection rating | IP20 |
| Protection level wire-wire | <15 V |
| Protection level wire-earth | <600 V |
| Series inductivity per wire | 120 μH ± 20 % |
| Connection system | Terminal |
| Impulse durability wire-wire | C1: 1 kV / 0,5 kA (8/20μs) |
| Impulse durability wire-earth | C2: 10 kV / 5 kA (8/20μs) |
| Temperature range | -40+80 °C |
| Division unit TE (17.5 mm) | 1 |
| Approvals | UL |
| | UL |