

# Technical data sheet

## Medium and fine protection FLD for two-core systems

110 V

Art.-Nr. 5098646



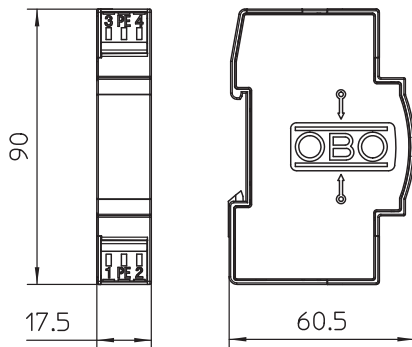
Surge protection for use in measurement and control technology

- Medium and fine protection
- Standard design for single core systems
- Two-stage protection circuit
- With installation-friendly, screwless connection terminals
- In space-saving 17.5 mm grid
- With inductive decoupling in the longitudinal branch

Application: Universal use on any 35 mm DIN profile rail in every commercially available distributor housing.



### Dimensions



### Master data

Item no.	5098646
Type	FLD 110
Description 1	Lightning barrier
Description 2	with decoupling inductivity
Dimension	110V AC
Smallest sales unit	1,00 Piece
Weight	5,20 kg/100 pc.

# Technical data sheet

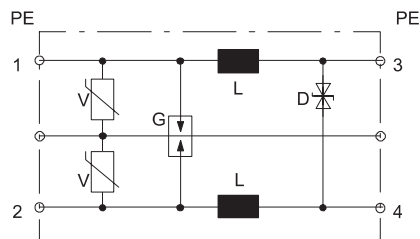
## Medium and fine protection FLD for two-core systems

110 V

Art.-Nr. 5098646



### Technical data



Category	Type 1+2+3 / D1+C2+C1
SPD to IEC 61643-21	Class I+II+III / D1+C2+C1
Connection cross-section, flexible	0,14 - 2,50 mm <sup>2</sup>
Connection cross-section, multi-wire	0,14 - 2,50 mm <sup>2</sup>
Connection cross-section, rigid	0,14 - 2,50 mm <sup>2</sup>
Number of poles	2,00
Insertion loss	3 dB @ 180 kHz dB
Earthing via:	Terminal
Explosion-tested version	<input type="checkbox"/>
Telecommunications contact	<input type="checkbox"/>
Total discharge current (8/20)	10 kA
Total discharge current (10/350)	D1: 3 kA
Frequency range	0 - 180 kHz
Frequency range	0,00 - 0,18 MHz
Cut-off frequency	0,18 MHz
Maximum continuous voltage AC	86,00 V
Maximum continuous voltage DC	122,00 V
Insulation resistance	> 100 MΩ
Impulse discharge current (10/350)	1,50 kA
Nominal discharge current (8/20 μs)	5,00 kA
Capacity (wire-wire)	<10 nF
Capacity (wire-earth)	<1 nF
Lightning protection zone LPZ	0→3
Rated current	1,00 A
Nominal load current AC	0,70 A
Nominal load current DC	1,00 A
Installation type	DIN rail 35 mm
Testing standard	IEC 61643-21
Shielding connection available	No
Protection rating	IP20
Protection level wire-wire	<300 V
Protection level wire-earth	<600 V
Series inductivity per wire	120 μH ± 20 %
Connection system	Terminal
Impulse durability wire-wire	C1: 1 kV / 0,5 kA (8/20μs)
Impulse durability wire-earth	C2: 10 kV / 5 kA (8/20μs)
Temperature range	-40+80 °C
Division unit TE (17.5 mm)	1
Approvals	UL
	UL