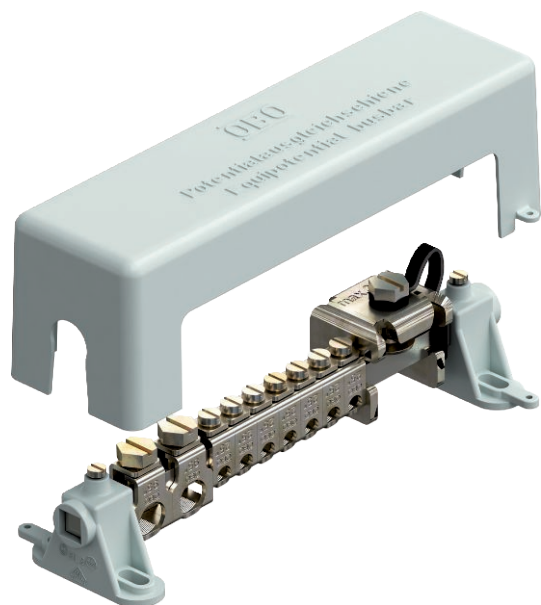


Technical data sheet

Equipotential busbar rail for indoors, VDE-tested

Item no. 5015650



Equipotential busbar for equipotential bonding to DIN VDE 0100-410/-540 as well as lightning protection equipotential bonding to DIN VDE 0185-305

- According to VDE 0618, Part 1
- With 10 x 10 mm clamping rail made of nickel-plated brass
- With contact-secure series terminals made of electrogalvanised steel
- Cover and rail stands made of grey polystyrene
- Sealable/labellable cover
- Lightning current carrying capacity 100 kA (10/350)
- Tension clamp with screw lock against self-loosening (e.g. required in industry)

Connection options:

- 7 single or multi-wire cables 2.5–25 mm² or fine-wire cables to 16 mm² (max. Ø 7 mm)
- 2 single or multi-wire cable 25–95 mm² or fine-wire cables to 70 mm² (max. Ø 13.5 mm)
- 1 flat conductor 30 x 3.5 mm



CuZn Brass

Additional product text 1 | With sealable cover hood,
made from impact-resistant plastic

Master data

Item no.	5015650
Type	1801 VDE
Description 1	Equipotential busbar
Dimension	217mm
Colour	Grey
Material	Brass
Material symbol	CuZn
Smallest sales unit (VG)	1,00 Piece
Weight	55,00 kg/100 pc.

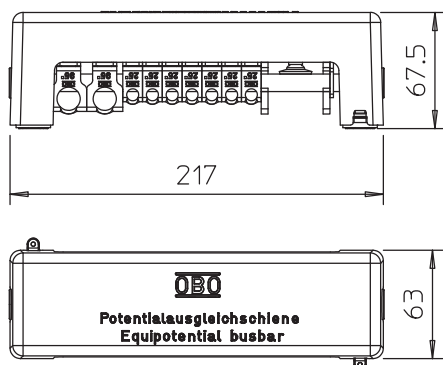
Technical data sheet

Equipotential busbar rail for indoors, VDE-tested

Item no. 5015650



Technical data



Length	217,00 mm
Width	63,00 mm
Height	67,50 mm
Connection option 1	7 x single or multi-core cables 2.5–25 mm ² or fine-core cables to 16 mm ² (max. Ø 7 mm)
Connection option 2	2 x single or multi-core cables 25–95 mm ² or fine-core cables to 70 mm ² (max. Ø 13,5 mm)
Connection option 3	1 x flat conductor to FL30 and to max. 5 mm thickness
Quantity of round conductor connections, total	0,00
Quantity of round conductor connections 8 mm	0,00
Quantity of round conductor connections 10 mm	0,00
Quantity of round conductor connections 8-10 mm	0,00
Quantity of flat conductor connections up to 30 mm	1,00
Quantity of flat conductor connections up to 40 mm	0,00
Quantity of cable connections up to 6 mm ² , rigid	0,00
Quantity of cable connections up to 16 mm ² , rigid	0,00
Quantity of cable connections up to 25 mm ² , rigid	7,00
Quantity of cable connections up to 95 mm ² , rigid	2,00
Version	With cover hood
Shape	Modular structure
Insulator	<input checked="" type="checkbox"/>
Dividing unit TE (10 mm)	20,00
Cross-section terminal strip	100,00 mm ²
Material of the terminal	Steel
Surface of the terminal	Electrogalvanised
Material of the contact rail	Brass
Surface of the contact rail	Nickel-plated